

Confronting change in logistics:

How the right solutions can help you stay effective

What's happening right now?

Agile competition, customer expectations and sustainability demands mean that firms are rethinking how to boost efficiency and keep costs down.

Getting it right can have a huge payoff

10% increase in efficiency can translate to €100bn in cost savings¹

With the right technology, you can address challenges, reduce spend and keep moving forward efficiently.

Expectations are growing

Today's shoppers want speed

40% say taking more than two days to deliver would prevent them purchasing²

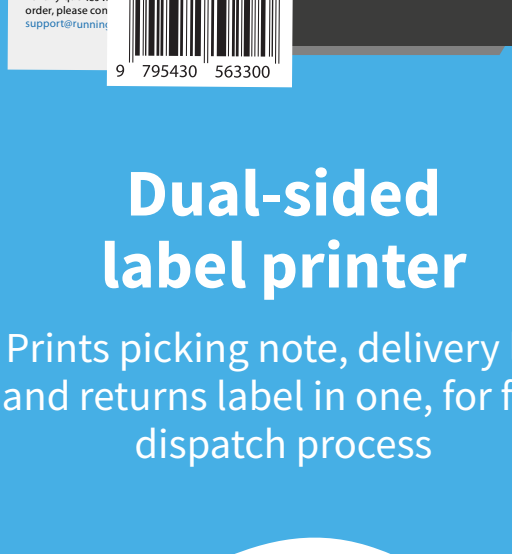
80% say a choice of returns channels is important³

62% say they're more afraid of their data being compromised now than two years ago⁴

Top tip

Fast and accurate document creation helps shipments move seamlessly through the supply chain.

That's where Toshiba solutions come in:



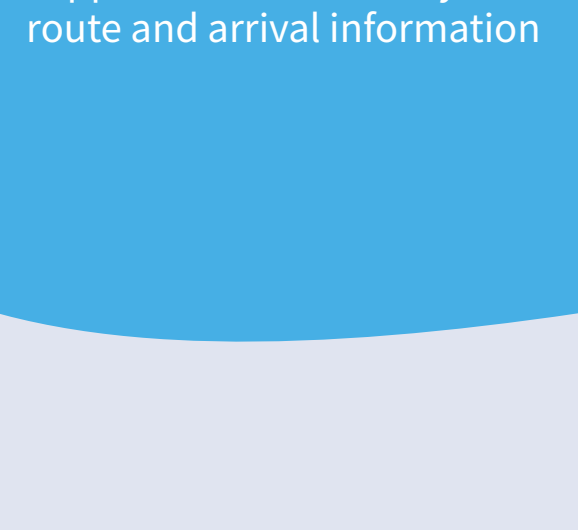
Dual-sided label printer

Prints picking note, delivery list and returns label in one, for fast dispatch process



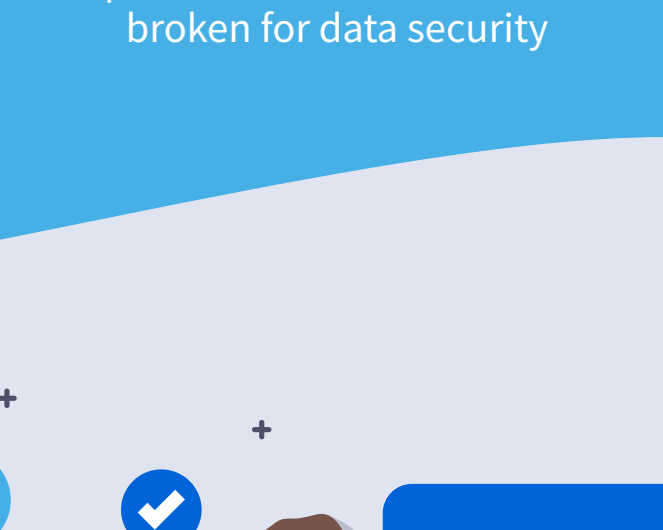
Desktop printing

Compact solutions that can easily integrate into existing networks



Interactive display screens

Support driver efficiency with route and arrival information



Mobile device management

Wipes data if devices are lost or broken for data security

Demand is high

Shoppers are moving online

95% of purchases worldwide will be made online by 2040⁵

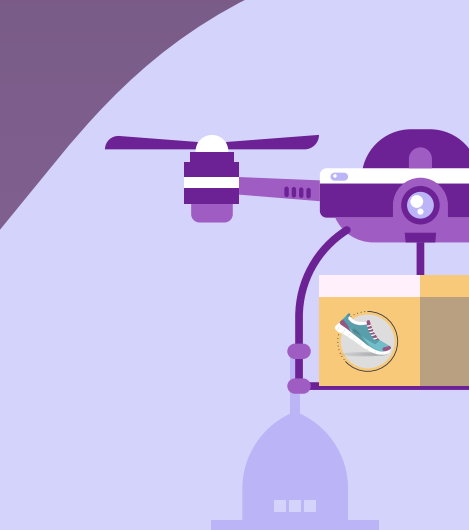
To meet the growing demand, warehouse automation is on the rise

12.6% compound annual growth rate between 2019 and 2024⁶

Top tip

Fast and accurate document creation helps shipments move seamlessly through the supply chain.

That's where Toshiba solutions come in:



Industrial barcode printer

Improves efficiency with innovative rotary cutter and speeds of up to 12 inches per second

Going digital

By utilising data, companies can anticipate and plan for peak hours to prevent standstills and bottlenecks.

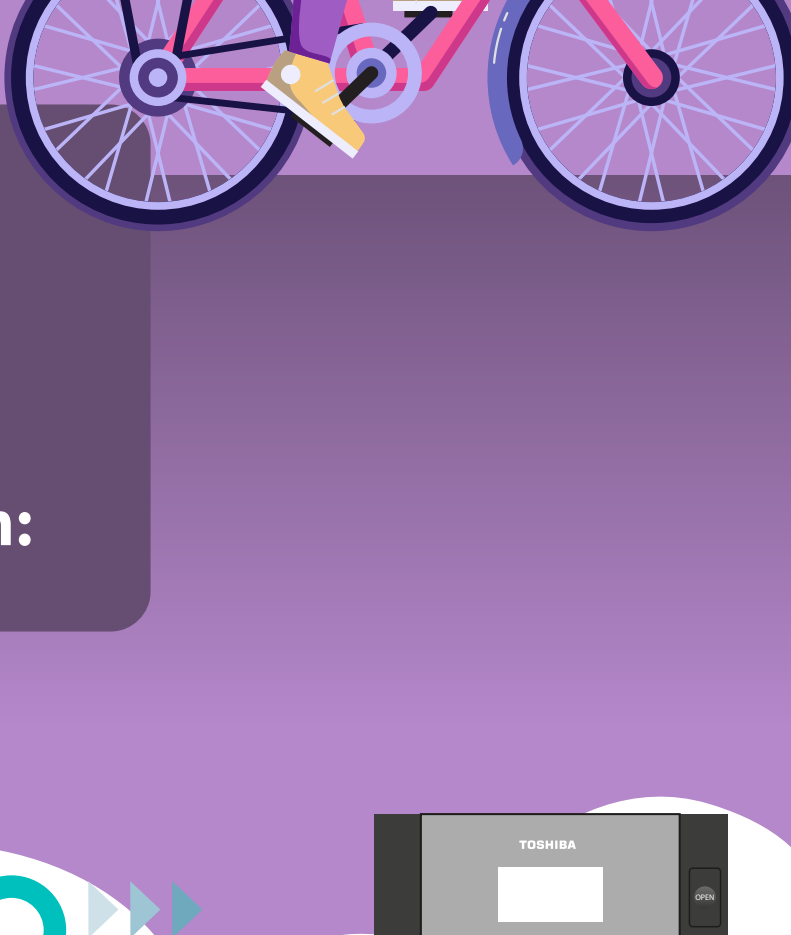
In fact, data and analytics are most important for the logistics industry.



90% of firms say data is highly significant, compared to an 83% average across industries⁷

50% say it's the biggest challenge facing the logistics industry⁷

But there's a lack of digital culture and training



Top tip

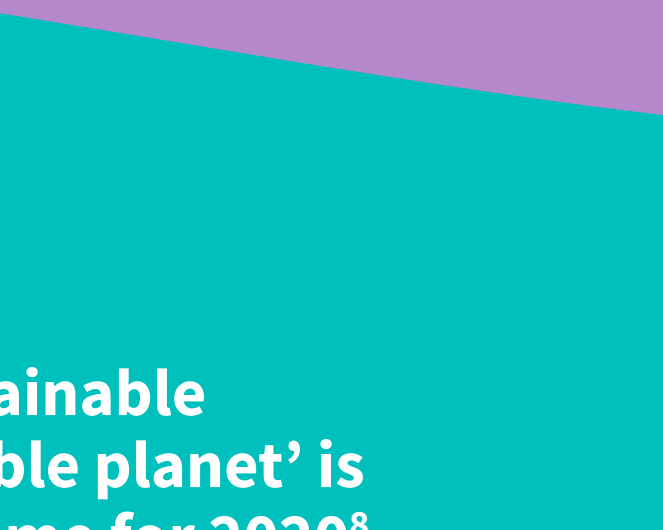
Automating documentation can cut down human input, while speeding up transportation.

That's where Toshiba solutions come in:



A3 multifunction device

Offers reliable and efficient print, scan and copy functionality



Document management systems

Speeds up time to market and document search



RFID tagging

Enables full traceability for flexible purchasing options for customers – online, in-store and via click and collect

The future is sustainable

From regulations 'Sustainable shipping for a sustainable planet' is the World Maritime theme for 2020⁸

Local authorities across the UK are implementing Low Emission Zones and Clean Air Zones⁹

...to market growth

50% growth for packaged goods marked as sustainable between 2013 and 2018¹⁰

Top tip

Eco-friendly technology can support sustainable processes and reduce carbon footprint.

That's where Toshiba solutions come in:



Dual-sided label printer

Prints on both sides of the label to minimise waste



Hybrid multifunction device

Delivers eco-printing and the reuse of paper



Toshiba consumables

Longer ribbon length for reduced roll changes, packaging waste and used rolls, and fewer deliveries for lower transportation costs



Carbon zero scheme

Carbon neutral delivery, helping you meet environmental targets

Delivering products for now, and the future

Toshiba solutions boost effectiveness and streamline operations across a wide variety of applications.

Implementing the right technology can lower costs, improve efficiencies and facilitate innovation in transport and logistics.

Contact Toshiba to find out more